



**NATURAL &
ORGANIC**

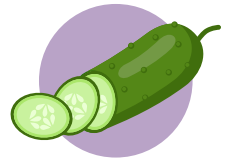
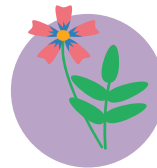
BioActive™

VEGGIE SUPERCHARGER



EXCELLENT FOR EDIBLES AND ALL PLANTS

Purple Cow Veggie Supercharger does exactly what the name says: It supercharges your plants, providing them with living organisms and trace minerals to produce nutrient dense vegetables and fruits. When your plants are healthier, you are healthier. Not only does our Veggie Supercharger contain humates and kelp meal - which provide Nitrogen, Potassium, Calcium, and other trace minerals - it utilizes endomycorrhizal fungi - which are known to help with nutrient uptake at the roots. It is a soluble powder that is meant to be used in Purple Cow CX-1 or water, and is an easy-to-use way to feed your plants "immediately."



**"IF YOU LIVE IN THE USA, CHECK OUT
PURPLE COW ORGANICS! THE BEST-EVER FOR
YOUR VEGETABLE GARDEN!"**

- PCO Customer

**SUPPLIES
BENEFICIAL
MICROBES,
ORGANIC MATTER
AND TRACE
MINERALS**

**EASY-TO-USE
SOLUBLE POWDER**



Seguin Gardens & Gifts, Cicero, IL

**Available in:
8 oz tub (12 tubs/case)**

BioActive™

VEGGIE SUPERCHARGER

MANURE
FREE



Ingredients:

- Humic Acid
- Mycorrhizal Fungi
- Soluble Potash
- Calcium

MAY NATURALLY INCREASE
PLANTS' UPTAKE OF
NUTRIENTS AND WATER

Guaranteed Analysis 3-0-7

- Humic Acid.....40%
- Total Nitrogen (N).....3%
 - Ammoniacal Nitrogen.....0.07%
 - Water Soluble Nitrogen.....2.83%
 - Water Insoluble Nitrogen....0.10%
- Soluble Potash (K₂O).....7%
- Calcium (Ca).....1.25%

USE RECOMMENDATIONS:



Use 1 tablespoon per 1 gallon of Purple Cow CX-1 or water

1 gallon of mixture can be used on up to 250 sq ft

Once dissolved in liquid: Use as soil drench or apply to plants/leaves

Apply as often as weekly

For indoor and outdoor plants

RETAIL

“TOP PIC IS APRIL 3, BOTTOM IS APRIL 30.
A CUSTOMER ASKED WHAT SOIL AND FERTILIZER DO
WE USE TO GET THEM SO BIG. MY ANSWER: PURPLE
COW ORGANICS.”

- Brad Wynne, Veg Out Gardens



Why Use Veggie Supercharger

Soluble - Works in water or Purple Cow CX-1, great for watering cans and tank or backpack sprayers. Also can be sprinkled over soil and watered in

Quick Results - Feeds the plant “immediately” at the leaf surface in addition to the root system

Includes Mycorrhizae - Most organic soluble fertilizers do not

